



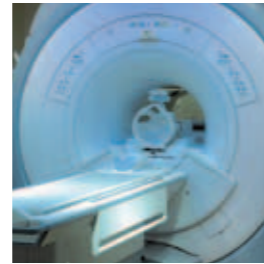
› Electrical engineering



› Energy technology



› Automotive



› Medical technology



› Transportation



› Construction industry



› Precision engineering



› Aviation and aerospace



› Hydraulics and industry



› Mechanical engineering

TRUST THE NUMBER ONE IN FASTENING AND SEALING TECHNOLOGY

Whether you need to choose the best possible fastening or sealing element, or are looking to develop a special solution for complex operational process and design work flows, KVT is your trusted partner. At KVT, efficiency and project security are our priorities. Find out about our wide range of products and solutions for your fastening needs, today!

For further information please visit

› www.kvt-koenig.com

KVT-Koenig AG

Dietikon/Zürich | Switzerland
info-CH@kvt-koenig.com

KVT-Koenig Brasil Comércio Importação e Exportação Ltda

São Paulo/SP | Brazil
info-BR@kvt-koenig.com

KVT-Koenig Trading Co., Ltd. Beijing

Beijing | China
info-CN@kvt-koenig.com

KVT-Koenig GmbH

Illerrieden | Germany
info-DE@kvt-koenig.com

KVT-Koenig GmbH

Asten/Linz | Austria
info-AT@kvt-koenig.com

KVT-Koenig Sp. z o.o.

Gdańsk | Poland
info-PL@kvt-koenig.com

KVT-Koenig S.R.L.

București | Romania
info-RO@kvt-koenig.com

KVT-Koenig spol. s.r.o.

Bratislava | Slovakia
info-SK@kvt-koenig.com

KVT-Koenig d.o.o.

Ljubljana | Slovenia
info-SI@kvt-koenig.com

KVT-Koenig s.r.o.

Brno | Czech Republic
info-CZ@kvt-koenig.com

KVT-Koenig Kft.

Budapest | Hungary
info-HU@kvt-koenig.com

KVT-Koenig LLC

North Haven | USA
info-US@kvt-koenig.com



JOINED TO LAST.

FILKO BLIND RIVET NUTS

EFFICIENT BLIND RESILIENT



JOINED TO LAST.



› KVT Solutioneering Group is an internationally well-known specialist for high-quality fastening and sealing applications. In both areas, KVT offers engineering solutions based on the wide product portfolio of the leading manufacturers in the market.

› Whether for the electronics and energy sector, the automotive and transportation industries, aviation and aerospace, engineering and construction, precision engineering, or medical equipment, high-performance solutions from KVT are found wherever absolutely safe and secure connections are essential. These small but extremely resilient components are applied where it matters most.

› KVT does not just supply standard products and individual components, but also provides close and active customer support in the search for ideal solutions, particularly when specific requirements must be fulfilled. This portfolio is complemented by a range of innovative tools and machines as well as, if needed, the integration into automated, serial production workflows.

› With over 70 years of engineering experience, solution-oriented expertise, as well as unique development and consulting skills, the KVT Solutioneering Group stands for best-in-class reliability.

JOINED TO LAST. KVT



**THE CENTER OF EXCELLENCE
FOR HIGH-PERFORMANCE
FASTENING TECHNOLOGY**

FILKO BLIND RIVET NUTS – STABLE THREADS

FILKO blind rivet nuts are single-part hollow-thread nuts which are installed 'blind' from a single side without the need for reworking. They therefore represent an efficient and impressive solution. Generally used for screw connections, they can also be applied in a combination of riveting and additional screw fastenings. A resilient thread is produced as a result, especially on thin components and hollow sections. The pronounced rivet beading on the rear side guarantees a high tear-out strength.

› Important detailed information regarding installation and the range of types available can be found on the following pages.

ADVANTAGES

- › Can be installed from a single side – 'blind application'
- › Can be used as a blind rivet or blind rivet nut
- › High tear-out strength as the result of pronounced rivet beading
- › Use on surface-treated parts possible
- › Wide range of head shapes and materials supplied
- › Efficient processing with manual or hydro pneumatic tools



Contents

6 – 7	Information, Technical data
8	FILKO blind rivet nuts, flat head, open, cold-formed Steel, zinc plated, thick coat passivated (RoHS compliant) (St) or stainless steel 1.4567 (A2) / AISI 304 Cu
9	FILKO blind rivet nuts, 90° countersunk head, open, cold-formed Steel, zinc plated, thick coat passivated (RoHS compliant) (St) or stainless steel 1.4567 (A2) / AISI 304 Cu
10 – 11	FILKO blind rivet nuts, flush head, open, cold-formed Steel, zinc plated, thick coat passivated (RoHS compliant) (St) or stainless steel 1.4567 (A2) / AISI 304 Cu
12	FILKO blind rivet nuts, small flat head, open, cold-formed Steel, zinc plated, thick coat passivated (RoHS compliant)
13	FILKO blind rivet nuts, flush head, open, cold-formed Steel, zinc plated, thick coat passivated (RoHS compliant)
14	FILKO blind rivet nuts, flat head, open Steel, zinc plated, thick coat passivated (RoHS compliant)
15	FILKO blind rivet nuts, flush head, open Steel, zinc plated, thick coat passivated (RoHS compliant)
16	FILKO blind rivet nuts, flat head, closed Steel, zinc plated, thick coat passivated (RoHS compliant)
17	FILKO blind rivet nuts, flush head, closed Steel, zinc plated, thick coat passivated (RoHS compliant)
18 – 19	FILKO blind rivet nuts, flat head, open Stainless steel (A2) AISI 302/304 / Stainless Steel 1.4404 (A4) / AISI 316L
20 – 21	FILKO blind rivet nuts, flush head, open Stainless steel (A2) AISI 302/304 / Stainless Steel 1.4404 (A4) / AISI 316L
22	FILKO blind rivet nuts, flat head, closed Stainless steel (A2) AISI 302/304
23	FILKO blind rivet nuts, flush head, closed Stainless steel (A2) AISI 302/304
24	FILKO blind rivet bolts, flat head Steel, zinc plated, thick coat passivated (RoHS compliant)
25	FILKO blind rivet bolts, countersunk head Steel, zinc plated, thick coat passivated (RoHS compliant)
26	WELL-NUT® blind clip-in nuts Neoprene, brass
28 – 29	Hand tools and pneumatic-hydraulic tools

INFORMATION

NOTES REGARDING INSTALLATION

FILKO

When installing blind rivet nuts, it is essential to follow a few basic instructions in order to ensure perfect screw connections with this system, as well as efficient functionality.

DETERMINING THE CLAMPED THICKNESS 'K'

As well as the right choice of thread size and the material of the nut, it is necessary to select the grip range of the nut, depending on the clamped thickness 'K'.

If the clamped thickness 'K' is at the limit of the grip range, preliminary trials should be carried out. For example, plate thickness and drilled hole tolerances may make it necessary to use a blind rivet nut with a larger or smaller grip range.

COUNTERSUNK HEAD NUTS

When using countersunk head nuts, a fault-free 90-degree countersink is necessary. Take care only to countersink to a depth which ensures that the countersunk head of the nut protrudes by at least 0.1 mm after installation.

This is necessary to ensure that the counterpiece can be supported by the nut, and that the frictional resistance generated during screw fastening prevents the nut from rotating.

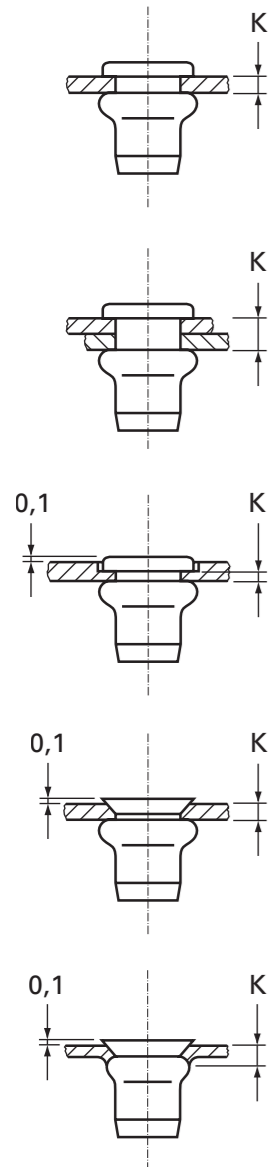
With **flush heads**, no countersinking of the drilled hole is necessary = time and cost saving.

HOLE SIZE

The hole size should not generally be larger than the shank dimension of the nut to be used, plus 0.1 mm. When this hole tolerance is complied with, the shank expansion which occurs during the installation gives the nut a firm grip, including twisting resistance.

SHANK SHAPES

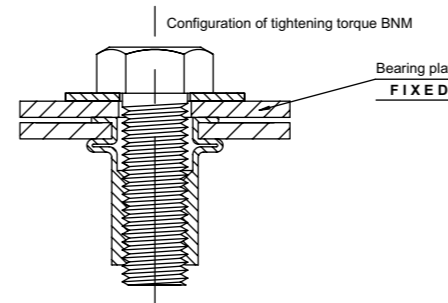
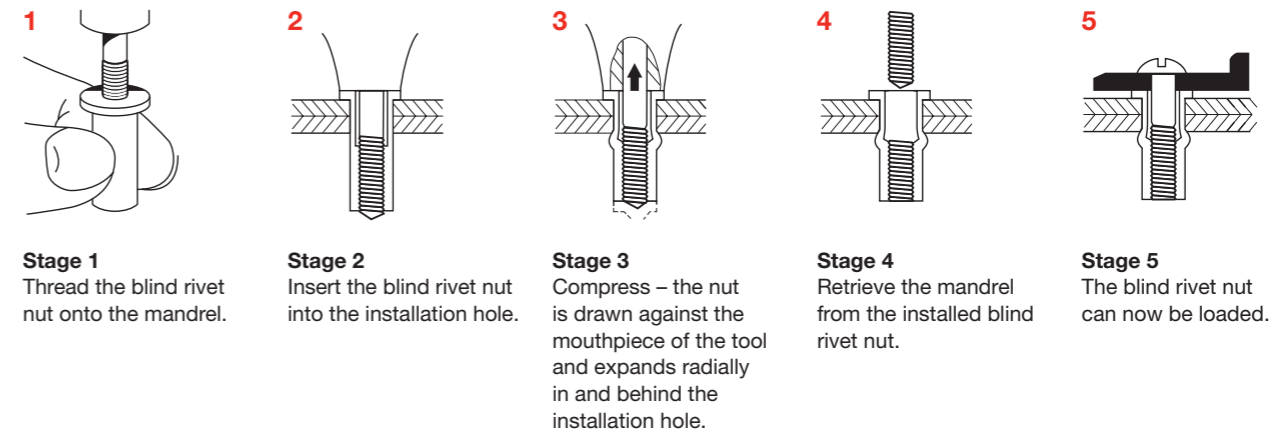
In the case of special requirements concerning resistance to twisting, we recommend blind rivet nuts with a knurled or hexagonal shank. However, blind rivet nuts should only be used in relatively soft material. Blind rivet nuts with a hexagonal shank always represent the best solution – when technically possible. We will be pleased to provide advice in case of doubt.



INFORMATION

INSTALLATION SEQUENCE

FILKO



Configuration for checking torque – the screwed-on part must not rotate.

TECHNICAL DATA (standard values)

Thread	Stainless steel			Steel			Aluminium		
	Axial load kN	Shear force kN	Tightening torques Nm	Axial load kN	Shear force kN	Tightening torques Nm	Axial load kN	Shear force kN	Tightening torques Nm
M3	6.0	2.8	1.2	5.0	2.5	1.2	2.8	1.0	0.6
M4	9.0	3.3	3.1	8.0	3.0	3.1	4.8	1.4	2.0
M5	12.0	3.6	6.2	11.0	3.3	6.2	6.5	1.8	4.0
M6	16.0	5.0	10.2	15.0	4.4	10.2	8.3	2.6	6.0
M8	30.0	7.3	24.2	28.0	6.5	24.2	13.0	4.3	15.0
M10	40.0	8.6	48.6	38.0	8.0	48.6	20.0	6.6	27.0
M12	60.0	12.0	86.0	56.0	11.6	86.0	28.0	9.0	45.0

These values may vary considerably depending on the quality, surface and dimensional accuracy of screws, plate and installation hole – it is therefore advisable to run initial trials.

Tightening torque is not identical with torsion resistance!



BLIND RIVET NUTS

FLAT HEAD, OPEN, COLD-FORMED

Material

Steel, zinc plated, thick coat passivated (RoHS compliant) (St)
or stainless steel 1.4567 (A2) / AISI 304 Cu

Round shank, type FK

3-D DATA <http://kvt.partcommunity.com>

Knurled shank, type RFK

3-D DATA: <http://kvt.partcommunity.com>

Hexagonal shank, type HEX FK

(Enhanced resistance to spinning in the hole)

3-D DATA: <http://kvt.partcommunity.com>

Additional types on request.

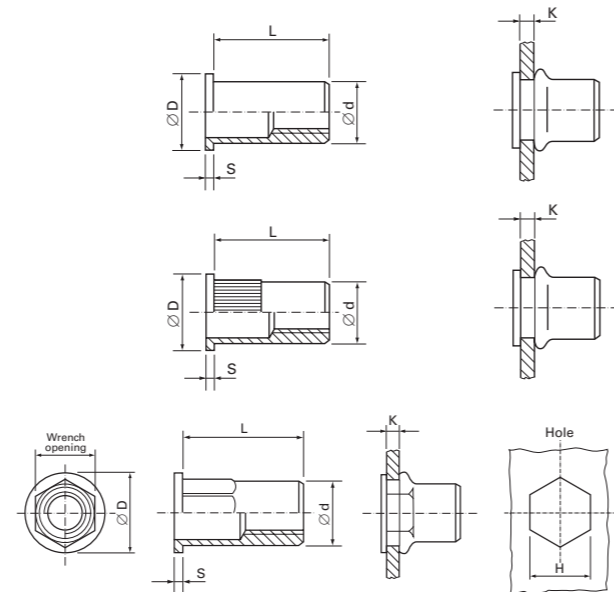
ORDERING DATA EXAMPLE:

M4-20 RFK St

Thread size M4 + code indicating grip range

Type: Knurled shank

Material: Steel



FILKO



BLIND RIVET NUTS

COUNTERSUNK HEAD 90°, OPEN, COLD-FORMED

Material

Steel, zinc plated, thick coat passivated (RoHS compliant) (St)
or stainless steel 1.4567 (A2) / AISI 304 Cu

Round shank, type SK

3-D DATA <http://kvt.partcommunity.com>

Knurled shank, type RSK

3-D DATA: <http://kvt.partcommunity.com>

Additional types on request.

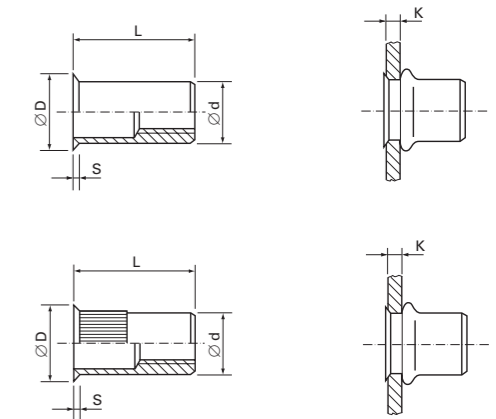
ORDERING DATA EXAMPLE:

M4-36 RSK St

Thread size M4 + Code indicating grip range

Type: Knurled shank

Material: Steel



FILKO

Thread	Grip range K	=	Code	Hole-Ø/H +0.1	Ø d Wrench opening	Ø D	S	L
M3	0.5 – 1.5		15	5.0	4.9	8.0	0.8	8.2
	1.5 – 2.5		25					9.2
M4	0.3 – 2.0		20	6.0	5.9	9.0	0.8	9.7
	1.5 – 3.0		30					10.7
	2.5 – 4.0		40					11.7
M5	0.5 – 3.0		30	7.0	6.9	10.0	1.0	13.0
	3.0 – 5.0		50					15.0
M6	0.5 – 3.0		30	9.0	8.9	13.0	1.5	14.5
	3.0 – 6.0		60					17.5
M8	0.5 – 3.5		35	11.0	10.9	16.0	1.5	16.0
	3.0 – 6.0		60					18.5
M10	0.5 – 3.5		35	13.0	12.9	19.0	2.0	21.0
	3.0 – 6.0		60					24.0
M12	0.5 – 4.0		40	16.0	15.9	23.0	2.0	24.0
	3.5 – 7.0		70					28.0

Thread	Grip range K	=	Code	Hole-Ø/H +0.1	Ø d	Ø D	S	L
M3	1.0 – 2.0		21	5.0	4.9	7.0	1.0	8.5
	2.0 – 3.0		31					9.5
M4	1.7 – 3.5		36	6.0	5.9	9.0	1.5	11.5
	3.5 – 5.0		51					13.5
M5	1.7 – 4.0		41	7.0	6.9	10.0	1.5	13.0
	4.0 – 6.0		61					15.0
M6	1.2 – 3.0		31	9.0	8.9	11.0	1.0	14.0
	3.0 – 6.0		61					17.0
M8	1.2 – 3.0		31	11.0	10.9	13.0	1.0	16.0
	3.0 – 6.0		61					19.0
M10	1.6 – 4.0		41	13.0	12.9	15.5	1.6	22.0
	3.5 – 6.5		66					25.0
M12	1.8 – 4.5		46	16.0	15.9	19.0	1.8	26.0
	4.0 – 7.5		76					29.0

* Countersinking of the drilled hole is necessary.
All dimensions are specified in mm.



BLIND RIVET NUTS

FLUSH HEAD*, OPEN, COLD-FORMED

Material

Steel, zinc plated, thick coat passivated (RoHS compliant) (St)
or stainless steel 1.4567 (A2) / AISI 304 Cu

Round shank, type TSN

3-D DATA: <http://kvt.partcommunity.com>

Knurled shank, type RTSN

3-D DATA: <http://kvt.partcommunity.com>

Hexagonal shank, type HEXTSN

(enhanced resistance to spinning in the hole)

3-D DATA: <http://kvt.partcommunity.com>

Additional types on request.

ORDERING DATA EXAMPLE:

M4-20 RTSN St

Thread size M4 + code indicating grip range

Type: Knurled shank

Material: Steel

Thread	Grip range K	=	Code	Hole- \varnothing /H +0.1	\varnothing d Wrench opening	\varnothing D	S	L
M3	0.5 – 1.5		15	5.0	5,0	5.6	0.35	8.5
	1.5 – 2.5		25					10.0
M4	0.5 – 2.0		20	6.0	5.9	6.8	0.5	10.5
	2.0 – 3.0		30					11.5
M5	0.5 – 3.0		30	7.0	6.9	8.0	0.5	11.5
	2.5 – 4.5		45					13.0
M6	0.5 – 3.0		30	9.0	8.9	10.0	0.6	14.5
	2.5 – 4.5		45					16.0
	3.0 – 6.0		60					17.5
M8	0.5 – 3.0		30	11.0	10.9	12.0	0.6	16.5
	2.5 – 4.5		45					18.0
	3.0 – 6.0		60					19.5
M10	0.5 – 3.0		30	13.0	12.9	14.2	0.6	20.0
	3.0 – 6.0		60					23.0
M12	0.5 – 4.0		40	16.0	16.0	17.2	0.6	24.0
	3.0 – 7.0		70					27.5

*With flush heads, no countersinking of the drilled hole is necessary \triangle time saving.
All dimensions are specified in mm.



BLIND RIVET NUTS

FLUSH HEAD*, OPEN, COLD-FORMED

Material

Steel, zinc plated, thick coat passivated (RoHS compliant) (St)
or stainless steel 1.4567 (A2) / AISI 304 Cu

Grip range of up to 3.0 for all thread sizes

Round shank, type Poly

3-D DATA: <http://kvt.partcommunity.com>

Knurled shank, type Poly R

3-D DATA: <http://kvt.partcommunity.com>

Hexagonal shank, type Poly HEX

(enhanced resistance to spinning in the hole)

3-D DATA: <http://kvt.partcommunity.com>

Additional types on request.

ORDERING DATA EXAMPLE:

M4 Poly R St

Thread size M4

Type: Knurled shank

Material: Steel

Thread	Grip range K	Hole- \varnothing /H +0.1	\varnothing d Wrench opening 1	\varnothing D Wrench opening 2	S	L
M4	up to 3.0	7.0	6.95	8.0	0.5	10.5
M5	up to 3.0	7.0	6.95	8.0	0.5	11.5
M6	up to 3.0	8.0	7.95	9.0	0.5	13.0
M8	up to 3.0	10.0	9.95	11.0	0.5	15.5

*With flush heads, no countersinking of the drilled hole is necessary \triangle time saving.
All dimensions are specified in mm.



BLIND RIVET NUTS

SMALL FLAT HEAD, OPEN, COLD-FORMED

Material

Steel, zinc plated, thick coat passivated (RoHS compliant)

Round shank, type AV KF

3-D DATA: <http://kvt.partcommunity.com>

Knurled shank, type AVR KF

3-D DATA: <http://kvt.partcommunity.com>

Hexagonal shank, type AVHEX KF

(enhanced resistance to spinning in the hole)

3-D DATA: <http://kvt.partcommunity.com>

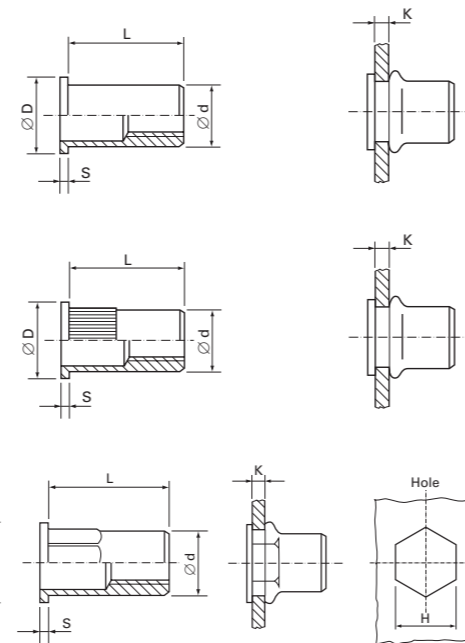
Additional types on request.

ORDERING DATA EXAMPLE: M4 AVR KF

Thread size M4

Type: Knurled shank

FILKO



BLIND RIVET NUTS

FLUSH HEAD*, OPEN, COLD-FORMED

Material

Steel, zinc plated, thick coat passivated (RoHS compliant)

Round shank, type AV KS

3-D DATA: <http://kvt.partcommunity.com>

Knurled shank, type AVR KS

3-D DATA: <http://kvt.partcommunity.com>

Hexagonal shank, type AVHEX KS

(enhanced resistance to spinning in the hole)

3-D DATA: <http://kvt.partcommunity.com>

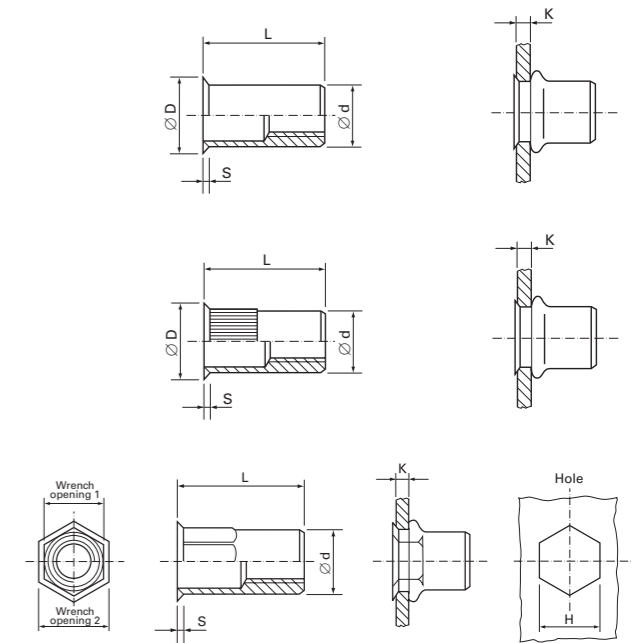
Additional types on request.

ORDERING DATA EXAMPLE: M4 AVR KS

Thread size M4

Type: Knurled shank

FILKO



Thread	Grip range K	Hole-Ø/H +0.1	Ø d Wrench opening	Ø D	S	L
M4	0.5 – 2.0	6.4	6.3	7.1	0.5	10.0
M5	0.5 – 3.0	7.2	7.0	7.9	0.5	11.5
M6	0.5 – 3.0	9.6	9.5	10.4	0.6	13.9
M8	0.5 – 3.0	10.6	10.5	11.5	0.6	15.4

Thread	Grip range K	Hole-Ø/H +0.1	Ø d Wrench opening 1	Ø D Wrench opening 2	S	L
M4	0.5 – 2.0	6.4	6.3	7.1	0.5	10.5
M5	0.5 – 3.0	7.2	7.0	7.9	0.6	12.0
M6	0.5 – 3.0	9.6	9.5	10.4	0.6	14.0
M8	0.5 – 3.0	10.6	10.5	11.5	0.6	16.0

*With flush heads, no countersinking of the drilled hole is necessary \triangle time saving.
All dimensions are specified in mm.



BLIND RIVET NUTS

FLAT HEAD, OPEN

Material

Steel, zinc plated, thick coat passivated (RoHS compliant)

Round shank, type UC

3-D DATA: <http://kvt.partcommunity.com>

Knurled shank, type RUC

3-D DATA: <http://kvt.partcommunity.com>

Hexagonal shank, type HUC

(enhanced resistance to spinning in the hole)

3-D DATA: <http://kvt.partcommunity.com>

Additional types on request.

ORDERING DATA EXAMPLE: M4 RUC FEF 3,0

Thread size M4
Type: Knurled shank
Code indicating grip range

Gewinde	Klemmbereich K	= Kennziffer	Loch- \varnothing /H +0,1	\varnothing d SW	\varnothing D	S	L
M3	up to 1.7	FEF 1.7	5.1	5.0	7.0	0.8	7.7
	1.1 – 2.3	FEF 2.3					8.3
M4	up to 2.1	FEF 2.1	6.1	6.0	8.0	0.8	10.1
	1.3 – 3.0	FEF 3.0					10.9
M5	up to 1.5	FEF 1.5	7.1	7.0	9.0	1.0	10.7
	1.0 – 2.5	FEF 2.5					11.7
	2.0 – 3.5	FEF 3.5					12.7
M6	up to 2.5	FEF 2.5	9.1	9.0	11.0	1.2	14.2
	1.5 – 3.5	FEF 3.5					15.2
M8	up to 3.0	FEF 3.0	11.1	11.0	14.0	1.5	15.6
	3.0 – 5.0	FEF 5.0					18.0
M10	up to 3.7	FEF 3.7	13.1	13.0	16.0	1.5	21.3
	3.0 – 5.5	FEF 5.5					23.0
M12	up to 4.2	FEF 4.2	16.1	16.0	20.0	1.7	24.0
	3.5 – 7.6	FEF 7.6					27.6



BLIND RIVET NUTS

FLUSH HEAD*, OPEN

Material

Steel, zinc plated, thick coat passivated (RoHS compliant)

Round shank, type UC

3-D DATA: <http://kvt.partcommunity.com>

Knurled shank, type RUC

3-D DATA: <http://kvt.partcommunity.com>

Hexagonal shank, type HUC

(enhanced resistance to spinning in the hole)

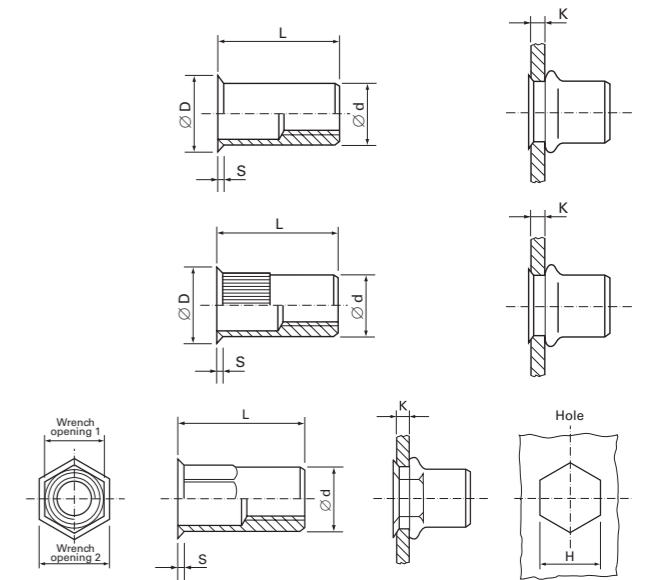
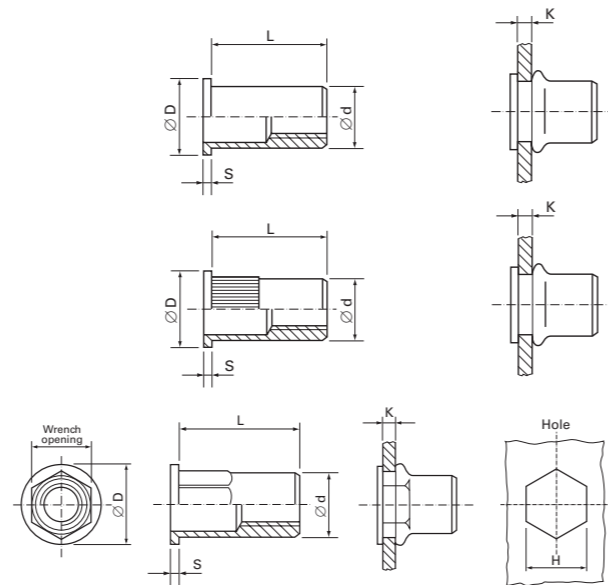
3-D DATA: <http://kvt.partcommunity.com>

Additional types on request.

ORDERING DATA EXAMPLE: M4 RUC FEKS 3,0

Thread size: M4
Type: Knurled shank
Code indicating grip range

Thread	Grip range K	= Code	Hole- \varnothing /H +0.1	\varnothing d Wrench opening	\varnothing D	S	L
M3	up to 1.1	FEKS 1.1	5.1	5.0	5.8	0.3	7.2
	1.1 – 2.3	FEKS 2.3					8.4
M4	up to 1.3	FEKS 1.3	6.1	6.0	6.8	0.3	9.4
	1.3 – 3.0	FEKS 3.0					11.0
M5	up to 1.5	FEKS 1.5	7.1	7.0	8.0	0.4	10.8
	1.0 – 2.5	FEKS 2.5					11.8
	2.0 – 3.5	FEKS 3.5					12.8
M6	up to 1.5	FEKS 1.5	9.1	9.0	10.0	0.4	13.3
	1.5 – 3.5	FEKS 3.5					15.3
M8	up to 1.8	FEKS 1.8	11.1	11.0	12.0	0.4	14.5
	1.0 – 3.0	FEKS 3.0					15.9
M10	up to 3.2	FEKS 3.2	13.1	13.0	14.4	0.5	20.7
	3.0 – 5.5	FEKS 5.5					22.9
M12	up to 4.2	FEKS 4.2	16.1	16.0	17.4	0.5	24.1
	3.5 – 7.6	FEKS 7.6					27.7





BLIND RIVET NUTS

FLAT HEAD, CLOSED

Material

Steel, zinc plated, thick coat passivated (RoHS compliant)

Round shank, type UC

3-D DATA: <http://kvt.partcommunity.com>

Knurled shank, type RUC

3-D DATA: <http://kvt.partcommunity.com>

Hexagonal shank, type HUC

(enhanced resistance to spinning in the hole)

3-D DATA: <http://kvt.partcommunity.com>

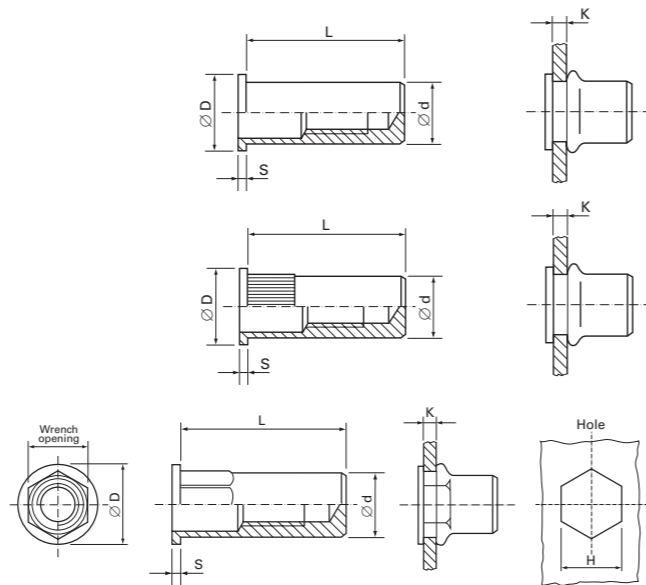
Additional types on request.

ORDERING DATA EXAMPLE: M4 RUC FEFG 3,7

Thread size M4

Type: Knurled shank

Code indicating grip range



FILKO



BLIND RIVET NUTS

FLUSH HEAD*, CLOSED

Material

Steel, zinc plated, thick coat passivated (RoHS compliant)

Round shank, type UC

3-D DATA: <http://kvt.partcommunity.com>

Knurled shank, type RUC

3-D DATA: <http://kvt.partcommunity.com>

Hexagonal shank, type HUC

(enhanced resistance to spinning in the hole)

3-D DATA: <http://kvt.partcommunity.com>

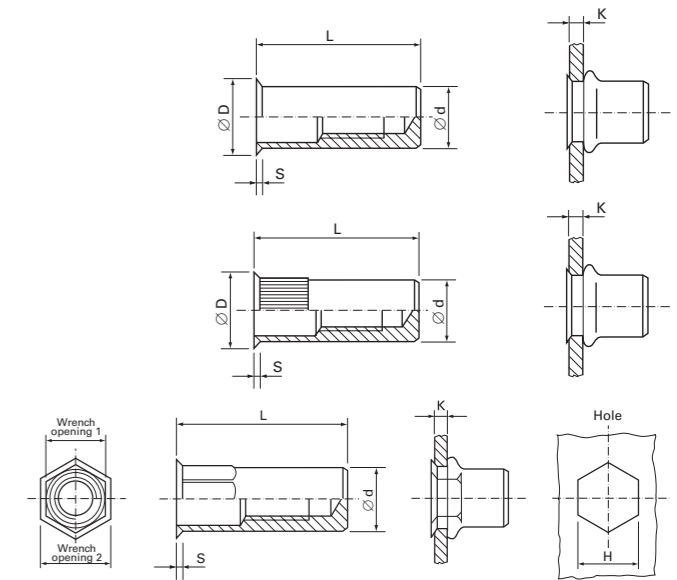
Additional types on request.

ORDERING DATA EXAMPLE: M4 RUC FEKSG 3,0

Thread size M4

Type: Knurled shank

Code indicating grip range



FILKO

Thread	Grip range K	=	Code	Hole- \varnothing /H +0.1	\varnothing d Wrench opening	\varnothing D	S	L
M3	up to 1.1		FEFG 1.1	5.1	5.0	7.0	0.8	11.6
	1.1 – 2.3		FEFG 2.3					12.8
	2.3 – 3.0		FEFG 3.0					13.4
M4	up to 2.1		FEFG 2.1	6.1	6.0	8.0	0.8	15.8
	2.1 – 3.7		FEFG 3.7					17.4
M5	up to 1.5		FEFG 1.5	7.1	7.0	9.0	1.0	17.2
	1.0 – 2.5		FEFG 2.5					18.2
	2.0 – 3.5		FEFG 3.5					19.2
M6	up to 2.5		FEFG 2.5	9.1	9.0	11.0	1.2	22.2
	1.5 – 3.5		FEFG 3.5					23.2
M8	up to 3.0		FEFG 3.0	11.1	11.0	14.0	1.5	25.1
	3.0 – 5.0		FEFG 5.0					27.5
M10	up to 3.7		FEFG 3.7	13.1	13.0	16.0	1.5	32.8
	2.5 – 5.2		FEFG 5.2					34.3
M12	up to 4.2		FEFG 4.2	16.1	16.0	20.0	1.7	36.0
	3.5 – 7.6		FEFG 7.6					39.6

Thread	Grip range K	=	Code	Hole- \varnothing /H +0.1	\varnothing d Wrench opening 1	\varnothing D Wrench opening 2	S	L
M3	up to 1.1		FEKSG 1.1	5.1	5.0	5.8	0.3	11.7
	1.1 – 2.3		FEKSG 2.3					12.9
	2.3 – 3.2		FEKSG 3.2					13.8
M4	up to 1.3		FEKSG 1.3	6.1	6.0	6.8	0.3	15.1
	1.3 – 3.0		FEKSG 3.0					16.8
M5	up to 1.5		FEKSG 1.5	7.1	7.0	8.0	0.4	16.5
	1.0 – 2.5		FEKSG 2.5					17.5
	2.0 – 3.5		FEKSG 3.5					18.5
M6	up to 1.5		FEKSG 1.5	9.1	9.0	10.0	0.4	21.3
	1.5 – 3.5		FEKSG 3.5					23.3
M8	up to 1.8		FEKSG 1.8	11.1	11.0	12.0	0.4	24.0
	1.0 – 3.0		FEKSG 3.0					25.4
	3.0 – 5.0		FEKSG 5.0					27.8
M10	up to 3.2		FEKSG 3.2	13.1	13.0	14.4	0.5	32.0
	3.0 – 5.5		FEKSG 5.5					34.4
M12	up to 4.2		FEKSG 4.2	16.1	16.0	17.4	0.5	36.1
	3.5 – 7.6		FEKSG 7.6					39.7

*With flush heads, no countersinking of the drilled hole is necessary \triangle time saving.
All dimensions are specified in mm.



BLIND RIVET NUTS

FLAT HEAD, OPEN

Material

Stainless steel (A2) AISI 302/304

Round shank, type C

3-D DATA: <http://kvt.partcommunity.com>

Knurled shank, type RC

3-D DATA: <http://kvt.partcommunity.com>

Hexagonal shank, type HC

(enhanced resistance to spinning in the hole)

3-D DATA: <http://kvt.partcommunity.com>

Additional types on request.

ORDERING DATA EXAMPLE: M4 RC ROF 3,0

Thread size M4

Type: Knurled shank

Code indicating grip range

Thread	Grip range K	=	Code	Hole- \varnothing /H +0.1	\varnothing d Wrench opening	\varnothing D	S	L
M3	up to 1.1		ROF 1.1	5.1	5.0	7.0	0.8	7.2
	1.1 – 2.3		ROF 2.3					7.8
	2.3 – 3.0		ROF 3.0					8.5
M4	up to 1.3		ROF 1.3	6.1	6.0	8.0	0.8	8.3
	0.8 – 2.1		ROF 2.1					9.1
	1.8 – 3.0		ROF 3.0					9.9
M5	up to 1.5		ROF 1.5	7.1	7.0	9.0	1.0	9.5
	1.0 – 2.5		ROF 2.5					10.5
	2.0 – 3.5		ROF 3.5					11.5
M6	up to 2.5		ROF 2.5	9.1	9.0	11.0	1.2	12.8
	1.5 – 3.5		ROF 3.5					13.8
M8	up to 3.0		ROF 3.0	11.1	11.0	14.0	1.5	15.1
	3.0 – 5.0		ROF 5.0					17.3
M10	up to 3.7		ROF 3.7	13.1	13.0	16.0	1.5	19.8
	3.0 – 5.5		ROF 5.5					21.3
M12	up to 4.2		ROF 4.2	16.1	16.0	20.0	1.7	20.6
	4.0 – 7.6		ROF 7.6					26.0



BLIND RIVET NUTS

FLAT HEAD, OPEN

Material

Stainless Steel 1.4404 (A4) / AISI 316L

Round shank, type C

3-D DATA: <http://kvt.partcommunity.com>

Hexagonal shank, type HC

(enhanced resistance to spinning in the hole)

3-D DATA: <http://kvt.partcommunity.com>

Additional types on request.

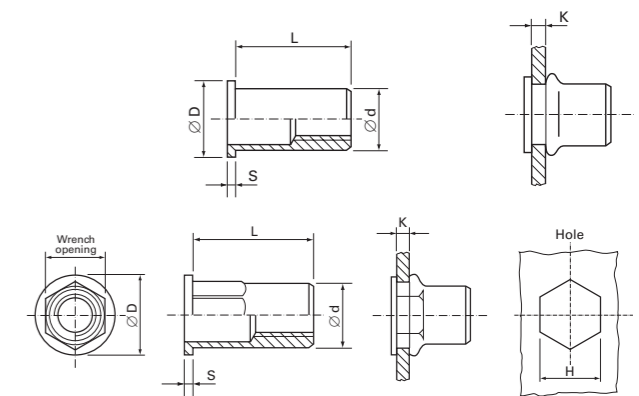
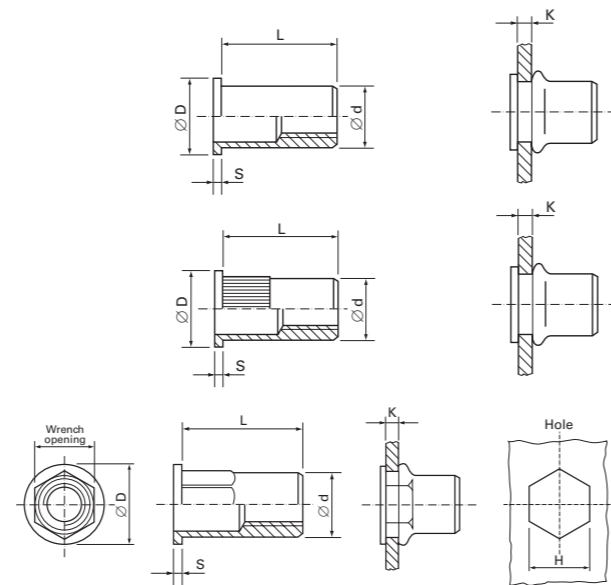
ORDERING DATA EXAMPLE: M4 HC 4404F 3,0

Thread size M4

Type Hexagonal shank

Code indicating grip range

Thread	Grip range K	=	Code	Hole- \varnothing /H +0.1	\varnothing d Wrench opening	\varnothing D	S	L
M4	up to 1.3		4404F 1.3	6.1	6.0	8.0	0.8	8.3
	0.8 – 2.1		4404F 2.1					9.0
	1.8 – 3.0		4404F 3.0					9.9
M5	up to 1.5		4404F 1.5	7.1	7.0	9.0	1.0	9.5
	1.5 – 3.5		4404F 3.5					11.5
M6	up to 1.5		4404F 1.5	9.1	9.0	11.0	1.2	11.8
	1.5 – 3.5		4404F 3.5					13.8
M8	up to 1.8		4404F 1.8	11.1	11.0	14.0	1.5	13.9
	1.0 – 3.0		4404F 3.0					15.4
	3.0 – 5.0		4404F 5.0					17.3





BLIND RIVET NUTS

FLUSH HEAD*, OPEN

Material

Stainless steel (A2) AISI 302/304

Round shank, type C

3-D DATA: <http://kvt.partcommunity.com>

Knurled shank, type RC

3-D DATA: <http://kvt.partcommunity.com>

Hexagonal shank, type HC

(enhanced resistance to spinning in the hole)

3-D DATA: <http://kvt.partcommunity.com>

Additional types on request.

ORDERING DATA EXAMPLE: M4 RC ROKS 3,0

Thread size M4
Type: Knurled shank
Code indicating grip range

Thread	Grip range K	=	Code	Hole- \varnothing /H +0.1	\varnothing d Wrench opening 1	\varnothing D Wrench opening 2	S	L
M3	up to 1.1		ROKS 1.1	5.1	5.0	5.8	0.3	6.7
	1.1 – 2.3		ROKS 2.3					7.9
	2.3 – 3.2		ROKS 3.2					8.8
M4	up to 1.3		ROKS 1.3	6.1	6.0	6.8	0.3	8.4
	1.0 – 2.3		ROKS 2.3					9.7
	1.8 – 3.0		ROKS 3.0					10.0
M5	up to 1.5		ROKS 1.5	7.1	7.0	8.0	0.4	9.6
	1.0 – 2.5		ROKS 2.5					10.6
	2.0 – 3.5		ROKS 3.5					11.6
M6	up to 1.5		ROKS 1.5	9.1	9.0	10.0	0.4	11.9
	1.5 – 3.5		ROKS 3.5					13.9
	up to 1.8		ROKS 1.8					14.1
M8	1.0 – 3.0		ROKS 3.0	11.1	11.0	12.0	0.4	15.6
	3.0 – 5.0		ROKS 5.0					17.4
	up to 3.2		ROKS 3.2					19.0
M10	3.0 – 5.5		ROKS 5.5	13.1	13.0	14.4	0.5	21.4
	up to 4.2		ROKS 4.2					22.5
M12	4.0 – 7.6		ROKS 7.6	16.1	16.0	17.4	0.5	26.1

*With special small countersunk heads, no countersinking of the drilled hole is necessary \triangle time saving.
All dimensions are specified in mm.



BLIND RIVET NUTS

FLUSH HEAD*, OPEN

Material

Stainless Steel 1.4404 (A4) / AISI 316L

Round shank, type C

3-D DATA: <http://kvt.partcommunity.com>

Hexagonal shank, type HC

(enhanced resistance to spinning in the hole)

3-D DATA: <http://kvt.partcommunity.com>

Additional types on request.

ORDERING DATA EXAMPLE: M4 HC 4404KS 3,0

Thread size M4
Type: Hexagonal shank
Code indicating grip range

Thread	Grip range K	=	Code	Hole- \varnothing /H +0.1	\varnothing d Wrench opening 1	\varnothing D Wrench opening 2	S	L
M4	up to 1.3		4404KS 1.3	6.1	6.0	6.8	0.3	8.4
	1.0 – 2.3		4404KS 2.3					9.7
	1.8 – 3.0		4404KS 3.0					10.0
M5	up to 1.5		4404KS 1.5	7.1	7.0	8.0	0.4	9.6
	1.5 – 3.5		4404KS 3.5					11.6
M6	up to 1.5		4404KS 1.5	9.1	9.0	10.0	0.4	11.9
	1.5 – 3.5		4404KS 3.5					13.9
M8	up to 1.8		4404KS 1.8	11.1	11.0	12.0	0.4	14.1
	1.0 – 3.0		4404KS 3.0					15.6
	3.0 – 5.0		4404KS 5.0					17.4

*With flush heads, no countersinking of the drilled hole is necessary \triangle time saving.
All dimensions are specified in mm.



BLIND RIVET NUTS

FLAT HEAD, CLOSED

Material

Stainless steel (A2) AISI 302/304

Round shank, type C

3-D DATA: <http://kvt.partcommunity.com>

Knurled shank, type RC

3-D DATA: <http://kvt.partcommunity.com>

Hexagonal shank, type HC

(enhanced resistance to spinning in the hole)

3-D DATA: <http://kvt.partcommunity.com>

Additional types on request.

ORDERING DATA EXAMPLE: M4 RC ROFG 3,7

Thread size M4

Type: Knurled shank

Code indicating grip range

Thread	Grip range K	=	Code	Hole- \varnothing /H +0.1	\varnothing d Wrench opening	\varnothing D	S	L
M3	up to 1.1		ROFG 1.1	5.1	5.0	7.0	0.8	11.2
	1.1 – 2.3		ROFG 2.3					11.9
	2.3 – 3.0		ROFG 3.0					12.6
M4	up to 1.3		ROFG 1.3	6.1	6.0	8.0	0.8	14.0
	0.8 – 2.1		ROFG 2.1					14.8
	2.5 – 3.7		ROFG 3.7					16.4
M5	up to 1.5		ROFG 1.5	7.1	7.0	9.0	1.0	16.0
	1.0 – 2.5		ROFG 2.5					17.0
	2.0 – 3.5		ROFG 3.5					18.0
M6	up to 2.5		ROFG 2.5	9.1	9.0	11.0	1.2	20.8
	1.5 – 3.5		ROFG 3.5					21.8
M8	1.0 – 3.0		ROFG 3.0	11.1	11.0	14.0	1.5	23.8
	3.0 – 5.0		ROFG 5.0					26.2
M10	1.0 – 3.7		ROFG 3.7	13.1	13.0	16.0	1.5	31.8
	2.5 – 5.2		ROFG 5.2					32.8
M12	up to 4.2		ROFG 4.2	16.1	16.0	20.0	1.7	34.3
	4.0 – 7.6		ROFG 7.6					37.9



BLIND RIVET NUTS

FLUSH HEAD*, CLOSED

Material

Stainless steel (A2) AISI 302/304

Round shank, type C

3-D DATA: <http://kvt.partcommunity.com>

Knurled shank, type RC

3-D DATA: <http://kvt.partcommunity.com>

Hexagonal shank, type HC

(enhanced resistance to spinning in the hole)

3-D DATA: <http://kvt.partcommunity.com>

Additional types on request.

ORDERING DATA EXAMPLE: M4 RC ROKSG 3,0

Thread size M4

Type: Knurled shank

Code indicating grip range

Thread	Grip range K	=	Code	Hole- \varnothing /H +0.1	\varnothing d Wrench opening 1	\varnothing D Wrench opening 2	S	L
M3	up to 1.1		ROKSG 1.1	5.1	5.0	5.8	0.3	10.7
	1.1 – 2.3		ROKSG 2.3					11.9
	2.3 – 3.2		ROKSG 3.2					13.8
M4	up to 1.3		ROKSG 1.3	6.1	6.0	6.8	0.3	14.4
	1.0 – 2.3		ROKSG 2.3					15.0
	1.8 – 3.0		ROKSG 3.0					16.0
M5	up to 1.5		ROKSG 1.5	7.1	7.0	8.0	0.4	16.5
	1.0 – 2.5		ROKSG 2.5					17.5
	2.0 – 3.5		ROKSG 3.5					18.5
M6	up to 1.5		ROKSG 1.5	9.1	9.0	10.0	0.4	19.9
	1.5 – 3.5		ROKSG 3.5					21.9
M8	up to 1.8		ROKSG 1.8	11.1	11.0	12.0	0.4	23.3
	1.0 – 3.0		ROKSG 3.0					24.8
M10	3.0 – 5.0		ROKSG 5.0	13.1	13.0	14.4	0.5	26.9
	up to 3.2		ROKSG 3.2					31.0
M12	2.5 – 5.5		ROKSG 5.5	16.1	16.0	17.4	0.5	33.4
	up to 4.2		ROKSG 4.2					34.5
	4.0 – 7.6		ROKSG 7.6					37.9

*With flush heads, no countersinking of the drilled hole is necessary \triangle time saving.
All dimensions are specified in mm.



BLIND RIVET BOLTS

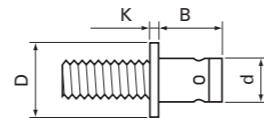
FLAT HEAD

Material

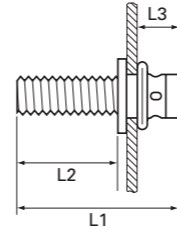
Steel, zinc plated, thick coat passivated (RoHS compliant)

We recommend the following tools: types DFS 309 T or PNT XT with appropriate ancillary equipment, see page 28/29.

Additional types on request.



FILKO



BLIND RIVET BOLTS

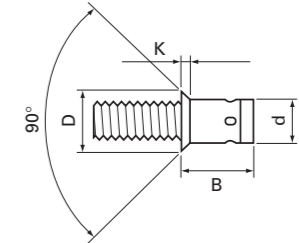
COUNTERSUNK HEAD

Material

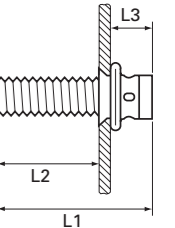
Steel, zinc plated, thick coat passivated (RoHS compliant)

We recommend the following tools: types DFS 309 T or PNT XT with appropriate ancillary equipment, see page 28/29.

Additional types on request.



FILKO



3-D DATA: <http://kvt.partcommunity.com>

Thread	Order code	Grip range K	Hole- \varnothing +0.1	D	K	B	d	L1	L2*	L3*
M4	M4x2010	0.2 – 2.0	5.5	8.0	0.50	8.0	5.4	17.0	10.0	3.5
	M4x2015							22.0	15.0	
M5	M5x2010	0.2 – 2.0	6.6	9.0	0.75	9.0	6.5	18.0	10.0	4.5
	M5x2015							23.0	15.0	
M5	M5x3510	2.0 – 3.5	6.6	9.0	0.75	10.5	6.5	18.0	10.0	4.5
	M5x3515							23.0	15.0	
M6	M6x2510	0.3 – 2.4	7.8	10.0	1.00	10.0	7.7	19.5	10.0	5.0
	M6x2515							24.5	15.0	
	M6x2520							29.5	20.0	
M6	M6x4010	2.5 – 4.0	7.8	10.0	1.00	11.5	7.7	19.5	10.0	5.0
	M6x4015							24.5	15.0	
	M6x4020							29.5	20.0	
M6	M6x6010	4.0 – 6.0	7.8	10.0	1.00	13.5	7.7	21.0	10.0	5.0
	M6x6012							24.0	12.0	
	M6x6015							26.0	15.0	
	M6x6020							31.0	20.0	
M8	M8x3015	0.3 – 3.0	9.9	12.0	1.50	12.5	9.8	27.0	15.0	7.0
	M8x3020							32.0	20.0	
M8	M8x5015	3.0 – 5.0	9.9	12.0	1.50	15.0	9.8	27.0	15.0	7.0
	M8x5020							32.0	20.0	

* Dimensions may differ according to the stroke setting of the tool.
All dimensions are specified in mm.

3-D DATA: <http://kvt.partcommunity.com>

Thread	Order code	Grip range K	Hole- \varnothing +0.1	D	K	B	d	L1	L2*	L3*
M4	M4x2610	1.6 – 2.5	5.5	8.0	1.50	8.5	5.4	17.0	10.0	3.5
	M4x2615							22.0	15.0	
M4	M4x3610	2.5 – 3.5	5.5	8.0	1.50	9.5	5.4	17.0	10.0	3.5
	M4x3615							22.0	15.0	
M5	M5x3110	1.5 – 3.0	6.6	9.0	1.40	10.0	6.5	18.0	10.0	4.5
	M5x3115							23.0	15.0	
M6	M6x3610	1.5 – 3.4	7.8	10.0	1.30	11.0	7.7	19.5	10.0	5.0
	M6x3615							24.5	15.0	
	M6x3620							29.5	20.0	
M8	M8x4115	1.5 – 4.0	9.9	12.0	1.30	13.5	9.8	27.0	15.0	7.0
	M8x4120							32.0	20.0	
M8	M8x5615	4.0 – 5.5	9.9	12.0	1.30	15.0	9.8	27.0	15.0	7.0
	M8x5620							32.0	20.0	

* Dimensions may differ according to the stroke setting of the tool.
All dimensions are specified in mm.



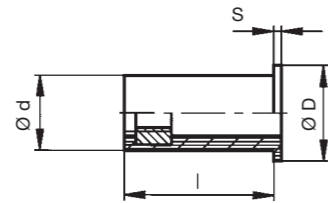
BLIND CLIP-IN NUTS

WELL-NUT® SERIES NEOPRENE VERSION

- › Can be installed without tools
- › Can be used blind (sections, pipes)
- › Also suitable for blind holes
- › Dampens shocks and vibration
- › Dielectrically (insulating)

Material

Neoprene/thread insert of brass



FILKO

FILKO

Flat head

Thread	Order code	Grip range	Hole-Ø +0.1	Ø d	Ø D	S	L
M3	M3 WN 11 A	0.4 – 4.0	8.0	7.9	11.5	1.6	11.1
M4	M4 WN 12 A	0.4 – 4.0	8.0	7.9	11.1	1.3	11.4
M5	M5 WN 16 A	0.9 – 5.9	9.6	9.5	14.3	1.0	15.9
	M5 WN 22 A	7.9 – 11.4			14.1	0.9	20.6
	M5 WN 25 A	7.9 – 16.3			14.3	1.3	25.4
	M5 WN 38 A	20.6 – 29.0			14.3	1.3	38.1
M6	M6 WN 15 A	0.4 – 2.8	12.8	12.7	16.0	1.3	14.7
	M6 WN 19 A	4.8 – 8.7			16.1	1.3	19.1
	M6 WN 25 A	6.4 – 11.6			16.1	1.3	25.4
M8	M8 WN 15 A	0.4 – 4.0	15.9	15.8	22.2	3.2	15.2

Large flat head

Thread	Order code	Grip range	Hole-Ø +0.1	Ø d	Ø D	S	L
M3	M3 WL 25 A	9.5 – 15.4	6.3	6.2	14.1	0.9	24.0
M4	M4 WL 13 A	0.4 – 4.4	8.0	7.9	19.1	1.5	12.7
M5	M5 WL 15 A	0.8 – 5.8	9.6	9.5	19.1	4.8	15.8
	M5 WL 16 A	0.8 – 5.8			19.1	2.0	15.8
M6	M6 WL 16 A	0.8 – 4.8	12.8	12.7	19.1	4.8	16.3

HAND TOOLS

FILKO



PNT 110

- › Hand pliers for installing smaller series
- › Suitable for repairs and laboratory purposes
- › Weight: 0.68 kg
- › Suitable for:

Blind rivet nuts	Thread sizes
Aluminium	M3/M4/M5/M6
Steel	M3/M4/M5/M6
High-grade steel	M3/M4/M5

- › Standard set: M3/M4/M5/M6

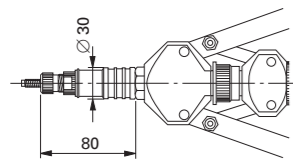


DFS 309 T

- › Hand tool for inserting blind rivet nuts and blind rivet bolts
- › Weight: 2.4 kg
- › Suitable for:

Blind rivet nuts	Thread sizes
Steel/Aluminium	M4 – M10
Stainless steel	M4 – M10 (Ø12)
Blind rivet bolts	Thread sizes
	M5 – M8

- › Complete set in aluminium case



PNEUMATIC-HYDRAULIC TOOLS

FILKO



Technical data	PNT XT 20	PNT XT 80	PNT XT 90
Weight	1.7 kg	2.4 kg	2.7 kg
Operating pressure	5 – 7 bar	5 – 7 bar	5 – 7 bar
Tensile force (at 6 bar)	10 kN	14 kN	25 kN
Stroke length	0 – 5.0 mm	0 – 6.0 mm	0 – 6.0 mm
Air consumption (at 7 bar)	ca. 0.9 l/stroke	ca. 1.8 l/stroke	ca. 2.5 l/stroke
Approx. height	155 mm	157 mm	157 mm
Approx. length	291 mm	361 mm	358 mm

Tool without equipment	Material	Thread sizes						
		M3	M4	M5	M6	M8	M10	M12
PNT XT 20	Aluminium	■	■	■	■	■	□	□
	Steel	■	■	■	■	□	□	□
	Stainless steel	■	■	■	■	□	□	□
PNT XT 80	Aluminium	■	■	■	■	■	■	□
	Steel	■	■	■	■	■	■	□
	Stainless steel	■	■	■	■	■	□	□
PNT XT 90	Aluminium	■	■	■	■	■	■	■
	Steel	■	■	■	■	■	■	■
	Stainless steel	■	■	■	■	■	■	■

- Recommended working range
- Possible working range
- Outside of the possible working range
- Limited working range depending on air pressure, shank shape, grip range/plate thickness (enquire/carry out trials)

KVT FASTENING SOLUTIONS



› KOENIG-expander®
sealing plugs



› POP® blind rivets



› FILKO blind rivet nuts



› HUCK® heavy duty rivets
and retaining ring bolts



› Quick fastening elements



› PEM®
self-clinching fasteners



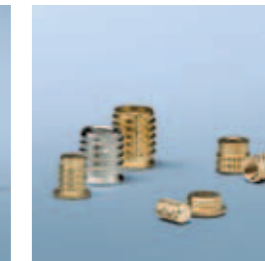
› Self-locking nuts



› Precisko® lockable
precision slotted nuts



› Southco®
access hardware



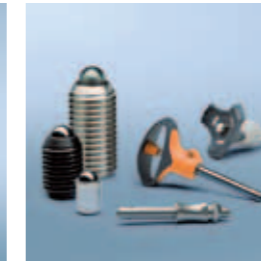
› Tappex® thread inserts for
plastics and light alloys



› bigHead® fasteners



› Wire thread and thread
inserts



› Ball lock pins with spring
plungers



› miniBOOSTER®
oscillating boosters

FASTENING SOLUTIONS FOR COMPLEX FIELDS OF APPLICATION

The comprehensive range of KVT products ensures that you will find the best solution for every challenge. The products presented here represent only part of our entire portfolio.

On request, we will be pleased to provide additional information material or personal advice. Feel free to contact us!

**Find out more about our range of products
and place your orders at our e-shop**

› www.kvt-koenig.com